



Milton Community Electricity Aggregation

Renewal Update - March 2024

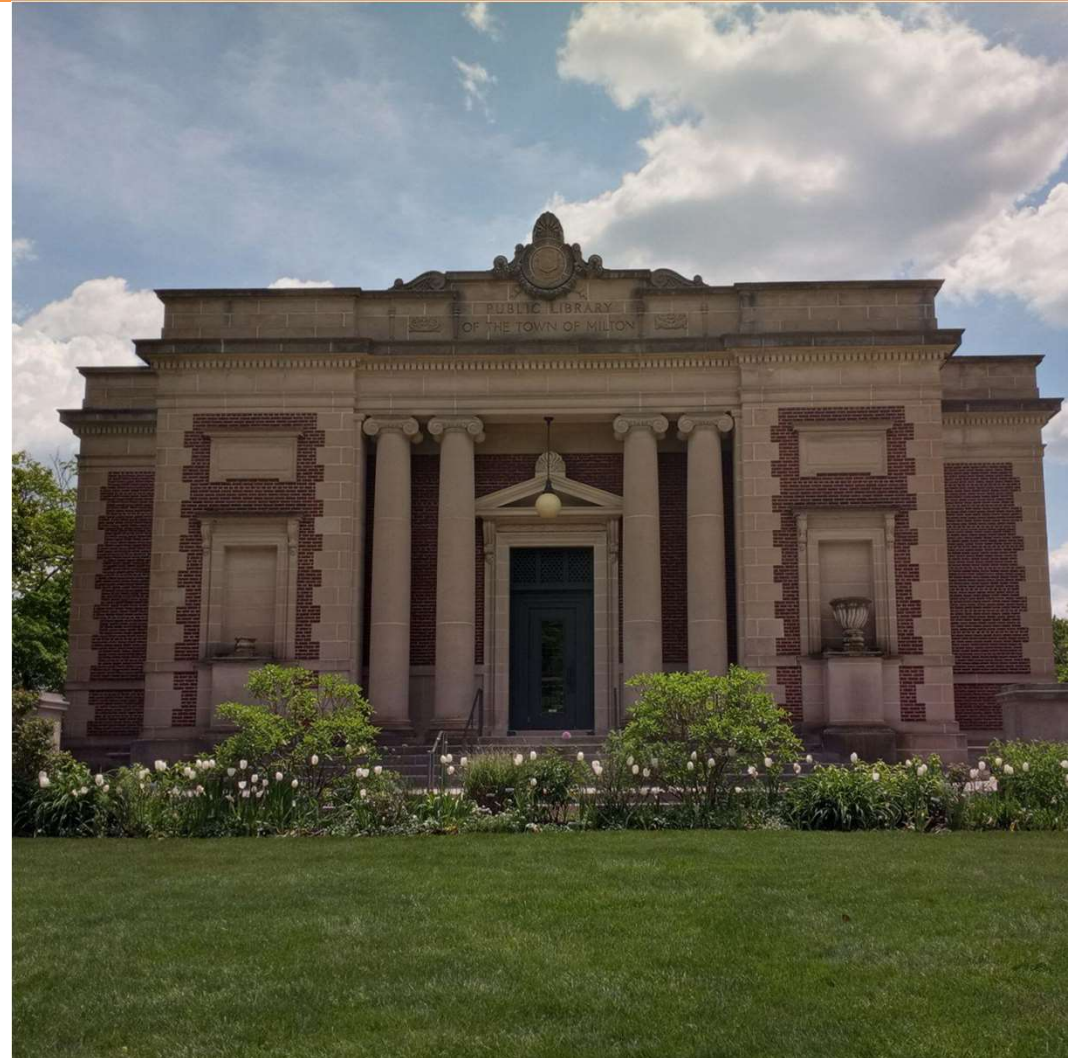
Agenda

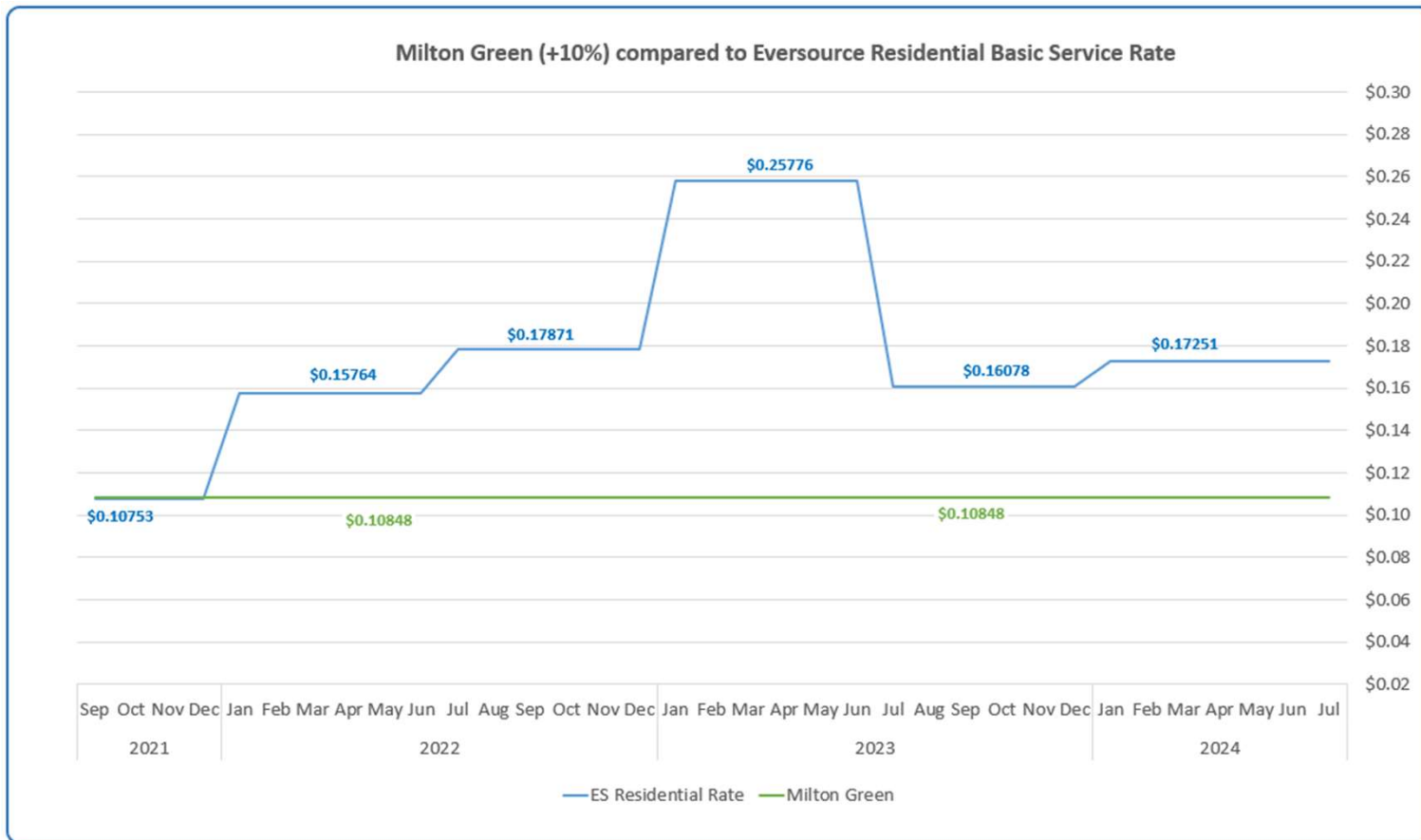
- Program Summary
- Market Update
- Voluntary Renewable Energy
- Renewal Bid Timeline



Program Summary

- Program Launched in Fall 2021
 - Sept. 2021 - Nov. 2024
 - Additional 10% New England RECs in the standard product

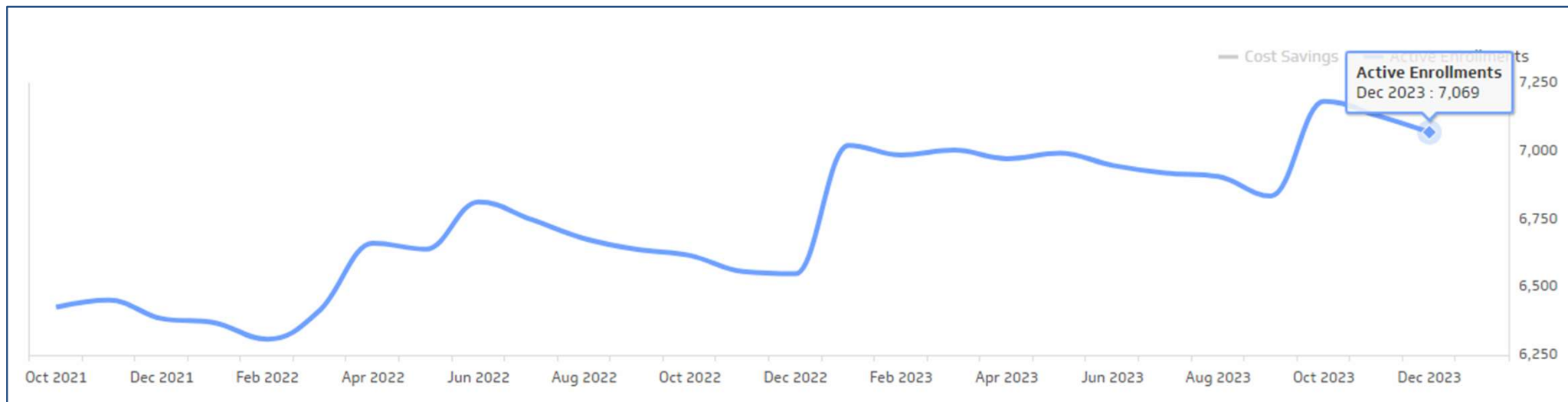




Future savings cannot be guaranteed because Basic Service rates change every six months for residential and commercial customers and every three months for industrial customers

Program Stats

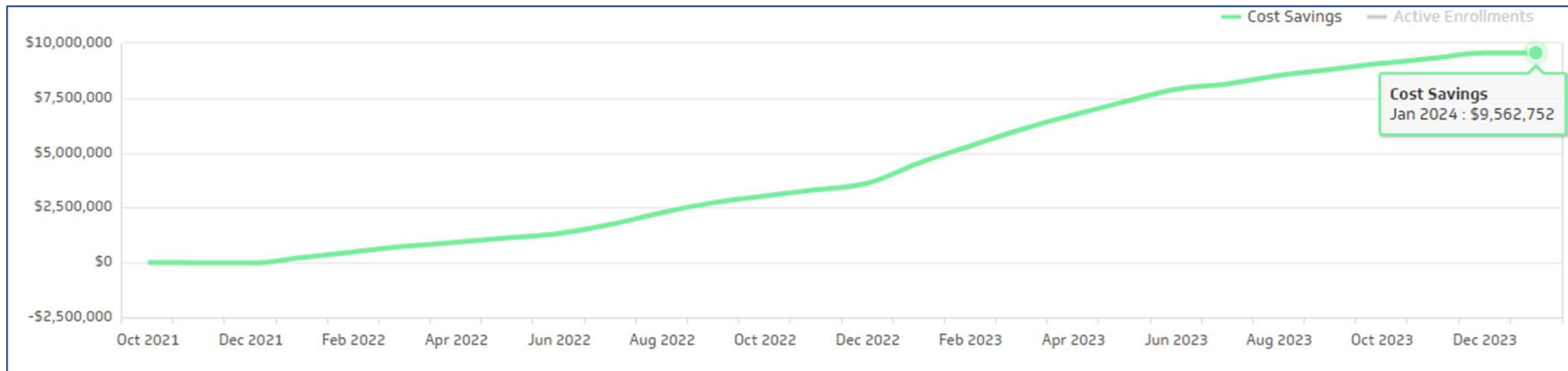
- Continued high participation: Over 7,000



Future savings cannot be guaranteed because Basic Service rates change every six months for residential and commercial customers and every three months for industrial customers.

Program Stats

- Savings of over \$9,500,000 since launch



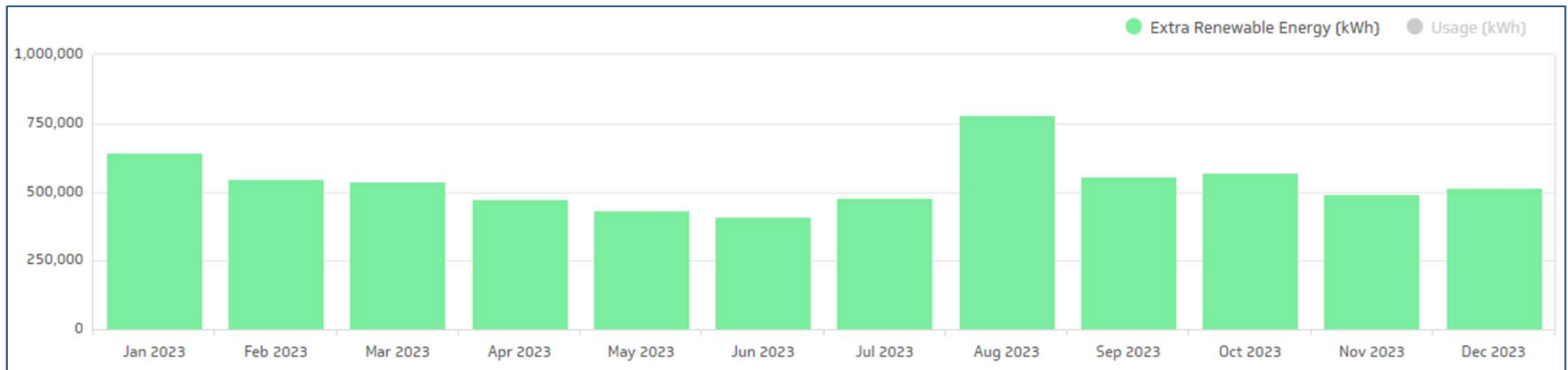
Future savings cannot be guaranteed because Basic Service rates change every six months for residential and commercial customers and every three months for industrial customers.

Program Stats

Product	Participants
Milton Basic	417
Milton Green	6,547
Milton 100% Green	105
TOTAL	7,069

Extra Renewable Energy

- Annually purchasing over 6,000,000 kWh of additional renewable energy
- Equivalent to output of more than one land-based wind turbine
- Avoiding 4.5 million pounds of carbon dioxide equivalent

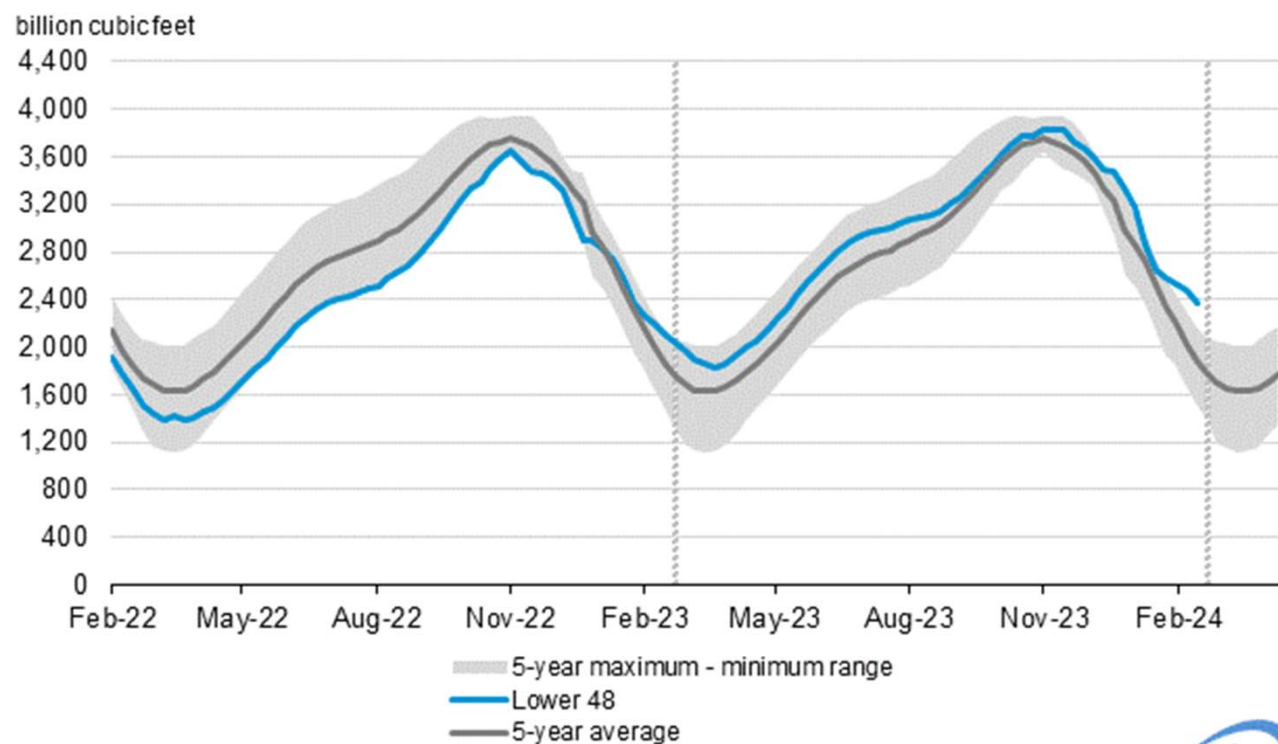


Agenda

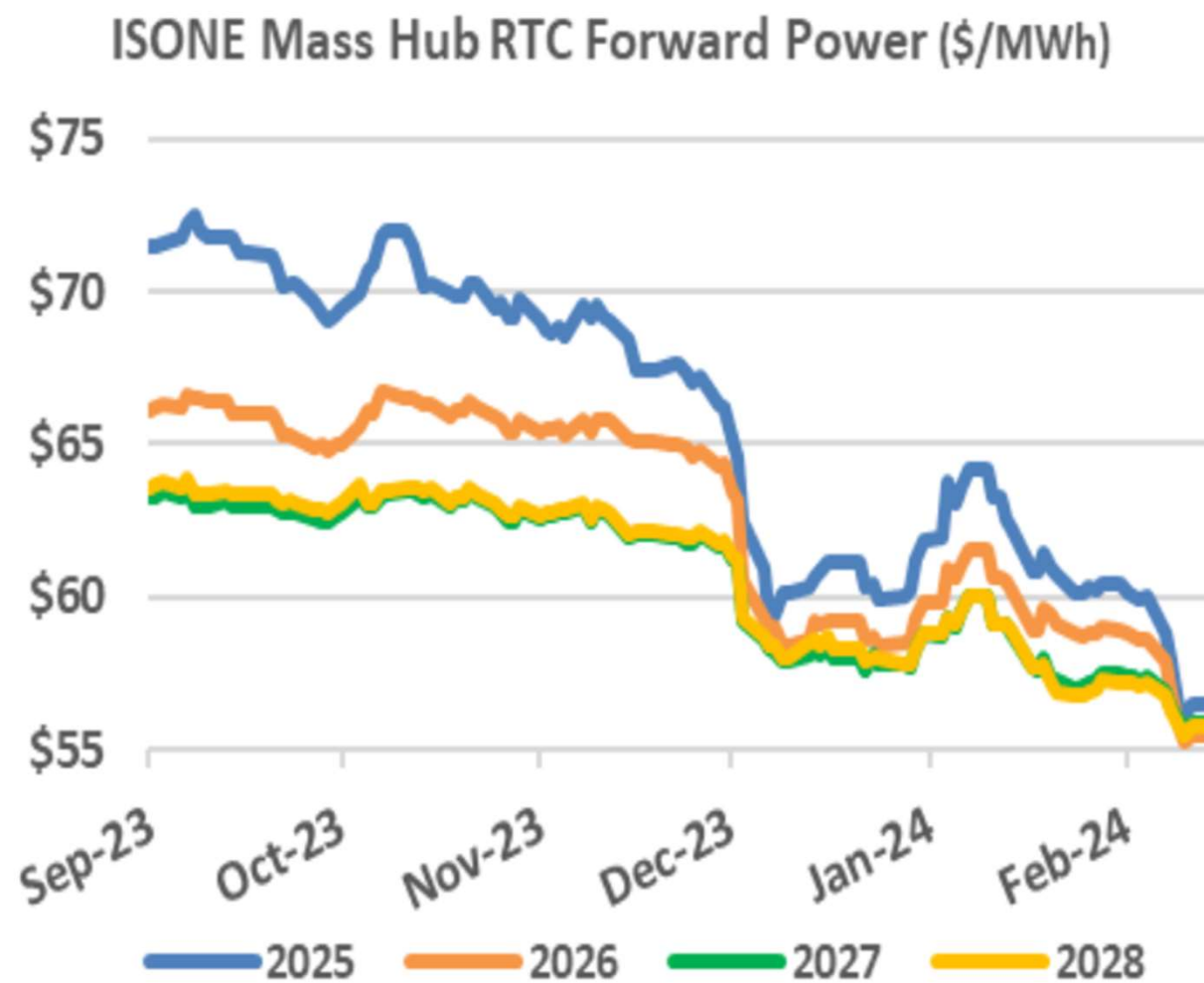
- Program Summary
- Market Update
- Voluntary Renewable Energy
- Renewal Bid Timeline



Working gas in underground storage compared with the 5-year maximum and minimum

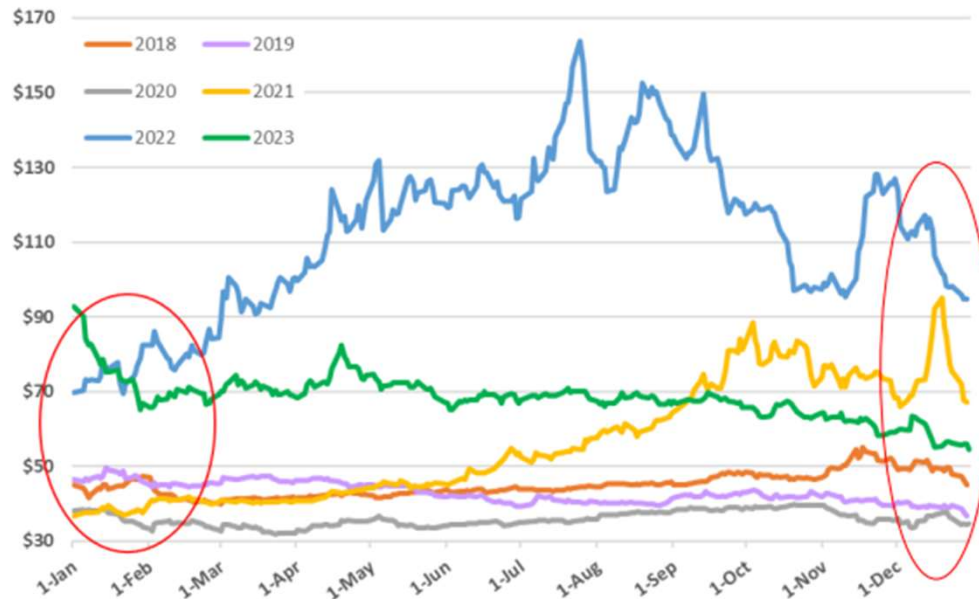


Data source: U.S. Energy Information Administration



When is the Best Time to Buy?

ISONE 12-Month Rolling Power Strip



12-Mo Rolling MA Hub

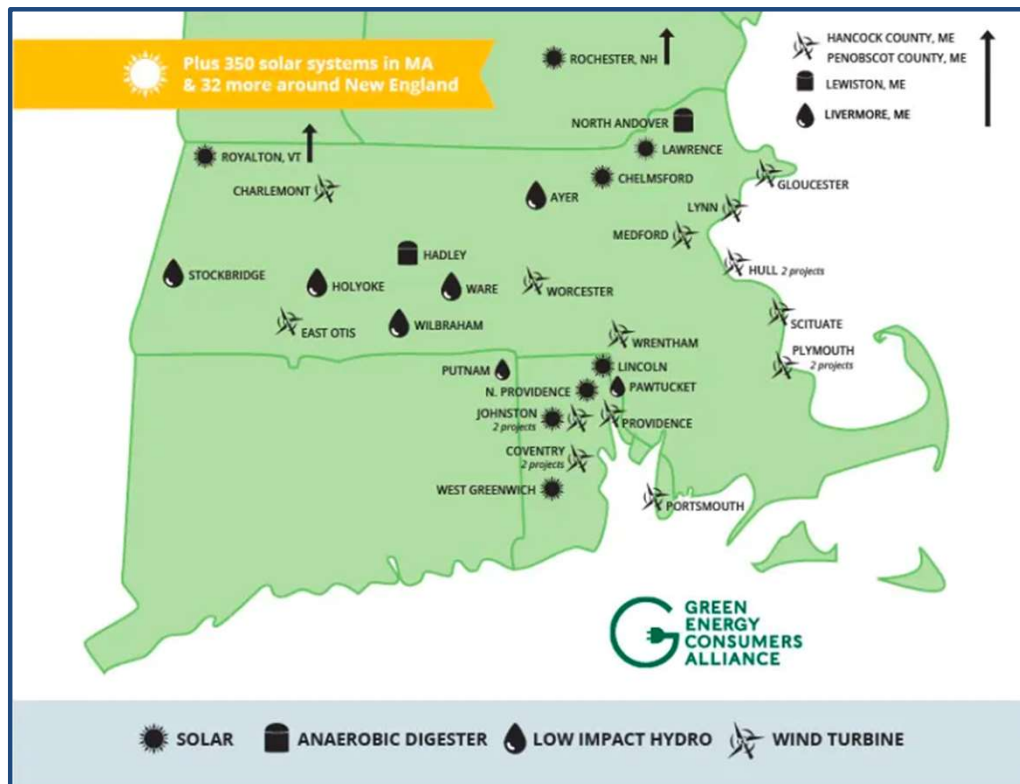
	Date	Price
2023	29-Dec	\$ 52.75
2022	3-Jan	\$ 69.78
2021	4-Jan	\$ 36.72
2020	23-Mar	\$ 31.96
2019	31-Dec	\$ 36.86
2018	28-Feb	\$ 39.79
2017	15-Dec	\$ 39.11
2016	9-Nov	\$ 36.52
2015	15-Dec	\$ 38.23
2014	31-Dec	\$ 53.40

Agenda

- Program Summary
- Market Update
- Voluntary Renewable Energy
- Renewal Bid Timeline

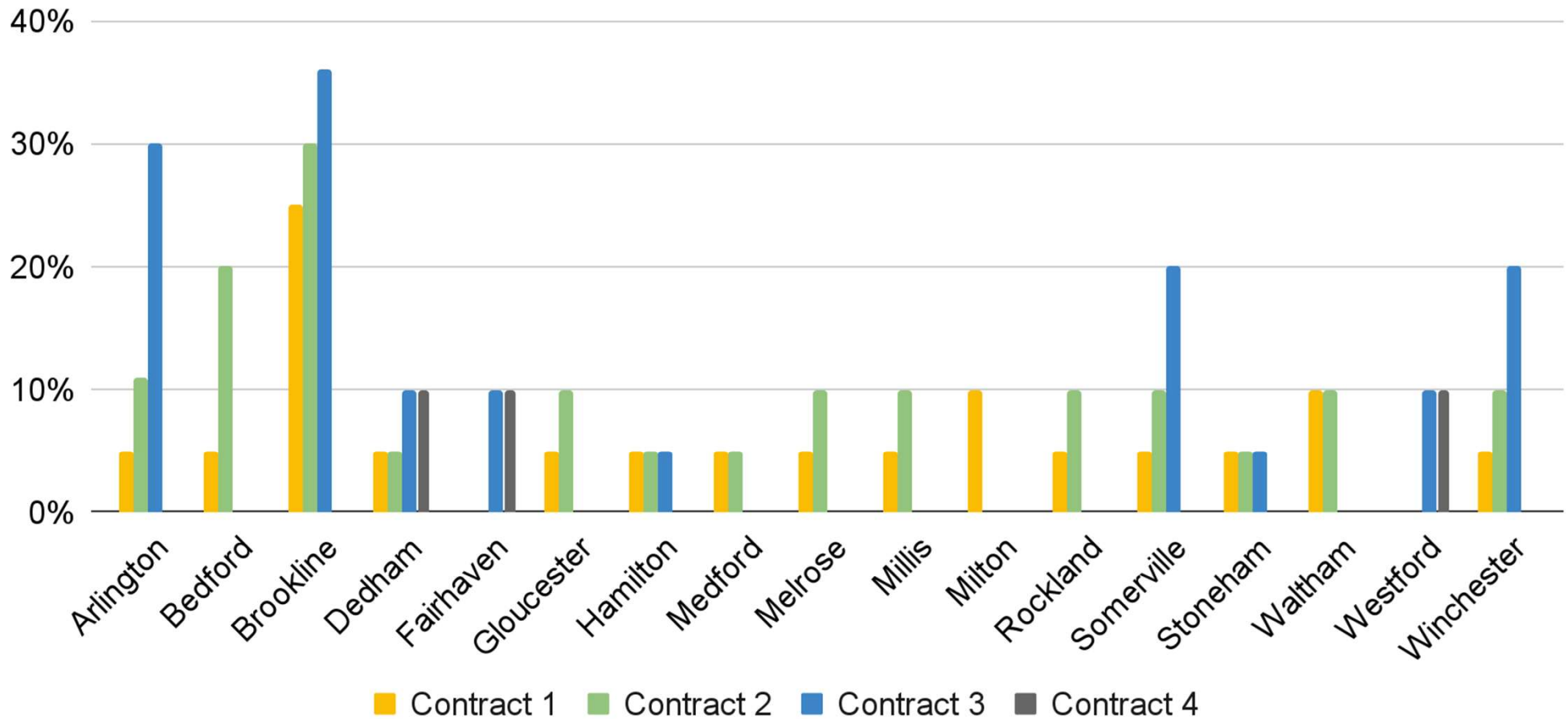


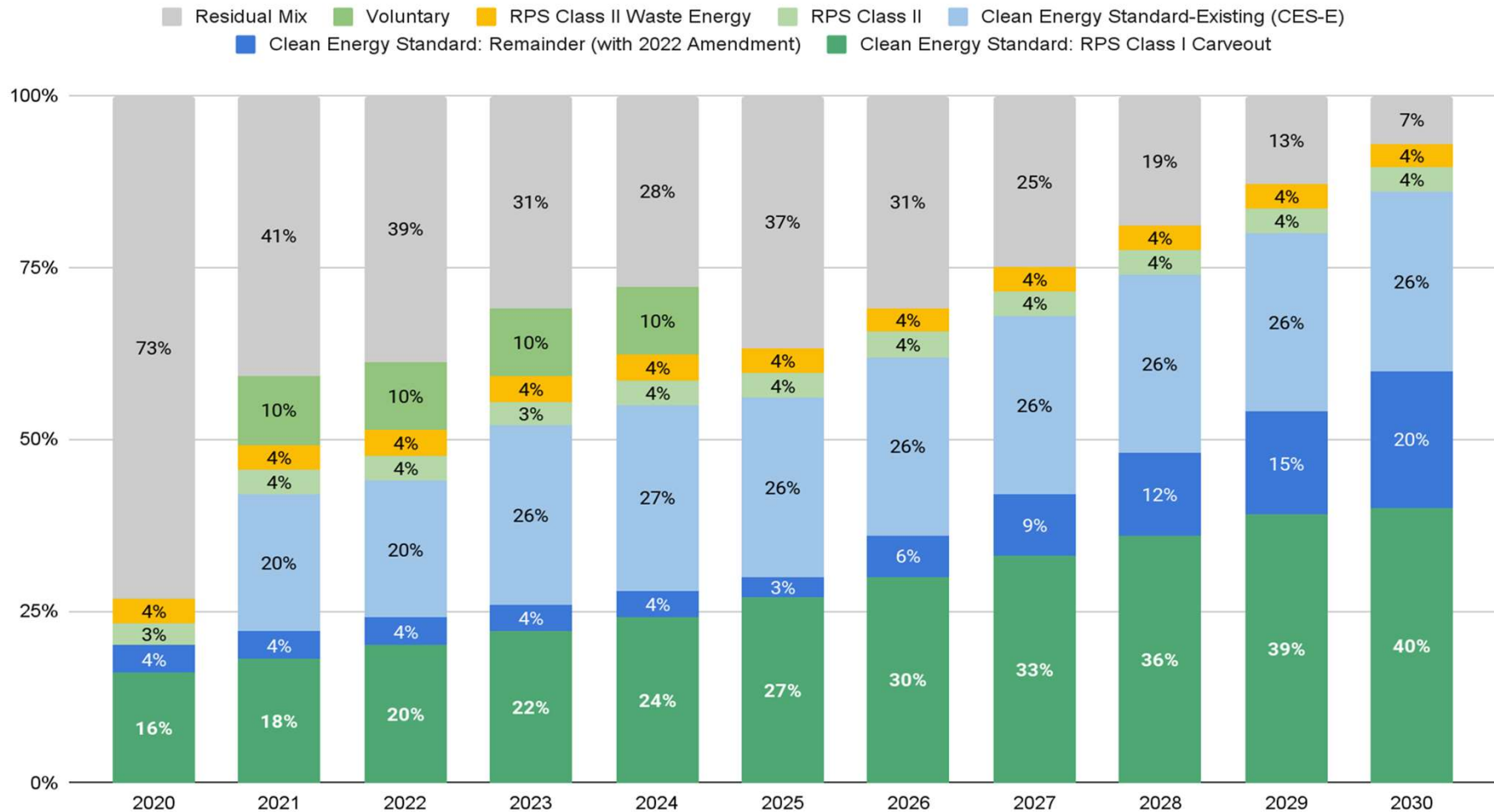
Voluntary Renewable Energy



- Voluntary MA Class I RECs sourced through Green Energy Consumers Alliance:
 - Only from New England
 - No biomass
 - Tax-deductible
- Will remain option for this renewal

Extra MA Class I in Standard Product





"Renewable energy resources" per Massachusetts: <https://www.mass.gov/guides/contract-summary-form#-4.-product-information->

Additional Cost for RECs

Current Contract: +10%: \$30.71/year or 0.37 cents/kWh

Renewal Outlook:

Extra MA Class I RECs	Estimated Annual Cost for Average Residential User	Estimated Cost per kWh (cent/Kwh)	Total Renewables 2027
10%	\$33.6	0.40	85%
15%	\$50.4	0.61	90%
20%	\$67.2	0.81	95%

Costs shown assume average Milton residential user of 8,300 kWh/year

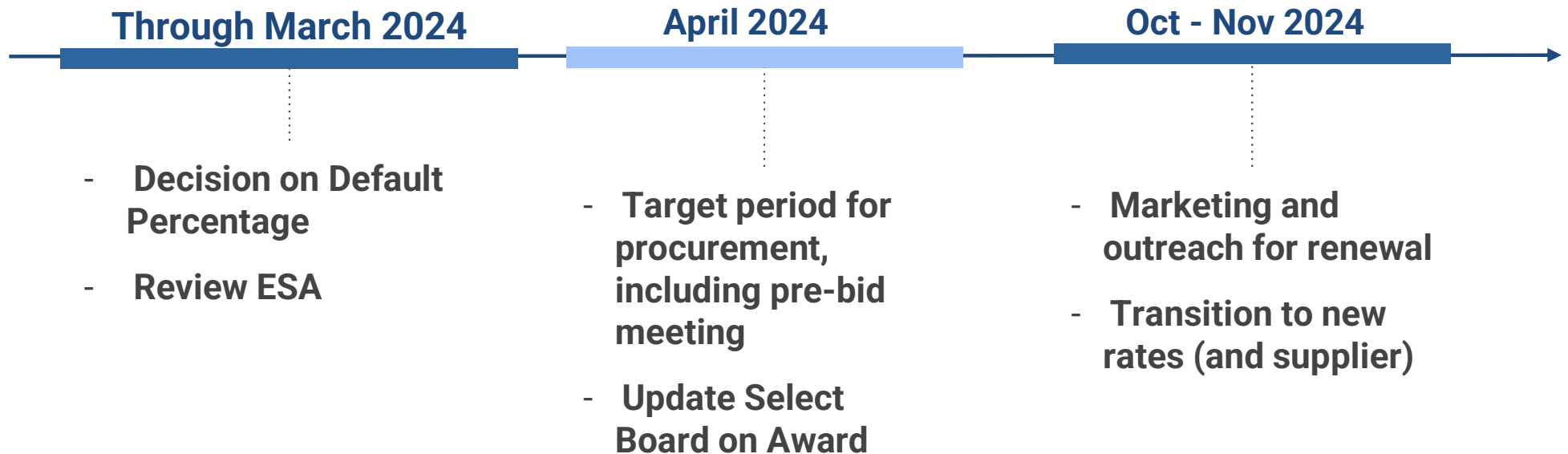
Future savings cannot be guaranteed because Basic Service rates change every six months for residential and commercial customers and every three months for industrial customers

Agenda

- Program Summary
- Market Update
- Voluntary Renewable Energy
- Renewal Bid Timeline



Renewal Timeline



Open Discussion

Thank You!